



---

# FS Camera Function Setup Manual

---

Ver. 1.2

Do not reprint this document without our permission.

©2018 FS Camera

# Introduction

This document summarizes how to set up the FS Camera function (called the camera below).



# Table of Contents

1. Operating environment.....	6
2. Installing the System .....	7
3. Checking System Operation.....	11



# 1. Operating environment

Prepare the following PC environment to install the product.

Table 1: Recommended environment

No.	Item	Environment
1	Recommended OS	Windows 7, Windows Server 2008 R2 Windows 10, Windows Server 2016
2	IIS	IIS 7.0 or later
3	Framework	.NET Framework 4.5
4	Browser	Chrome only
5	Installation user	User with administrator privileges

## 2. Installing the System

1. Insert the setup media into the PC.

When you insert the media, the screen shown in "Figure 1: Setup screen" automatically opens.

Perform setup by following the on-screen instructions.

\* You must install Flex Signal in advance.

\* Perform this operation as a user with administrator privileges.

\* If the screen shown in "Figure 1: Setup screen" does not automatically open, select "FSCameraSetup\_x.x.x.x.exe" in the setup media.

\* The x's in FSCameraSetup\_x.x.x.x.exe represent numbers.

(Example: FSCameraSetup\_1.0.0.0.exe)

2. Select "Next" by following the on-screen instructions.



Figure 1: Setup screen

3. Select "Install."

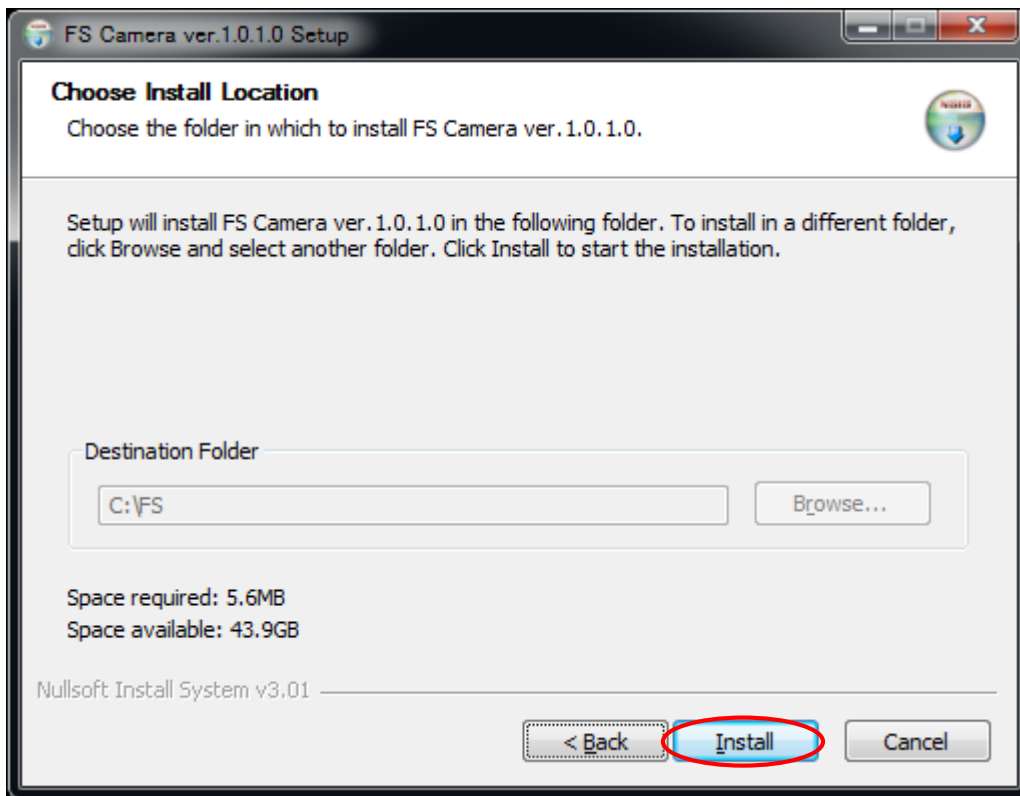


Figure 2: Setup installation destination screen



4. This is the installation screen. Wait until installation has successfully completed.

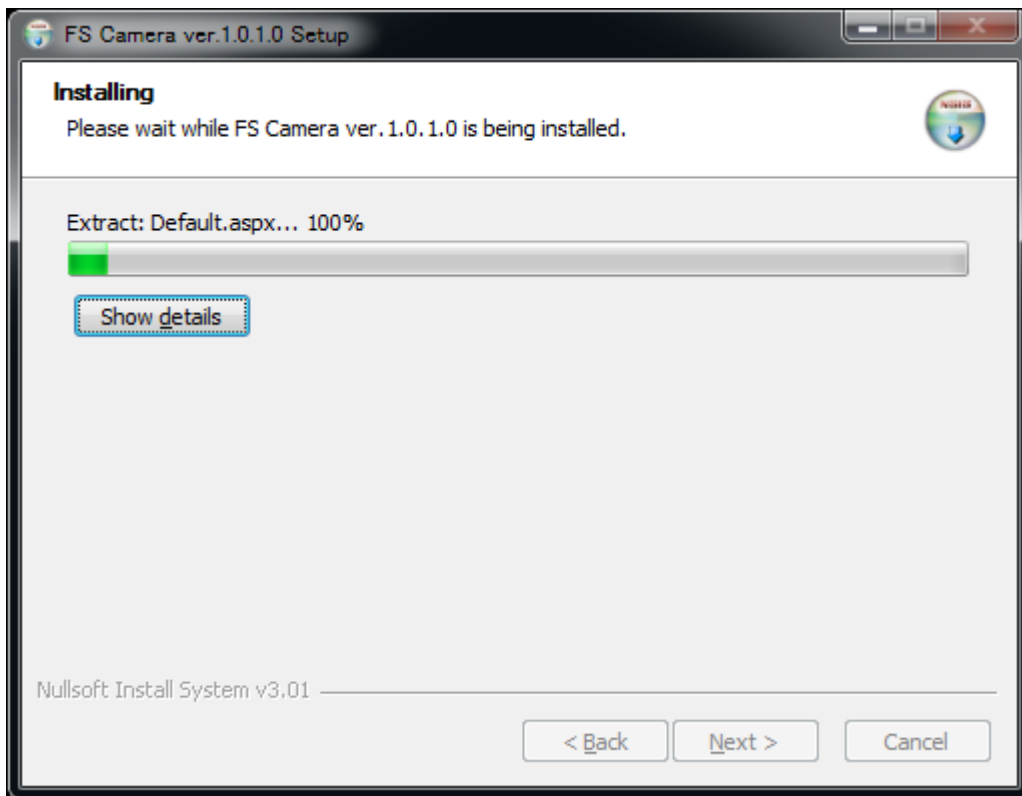


Figure 3: Screen displayed during the setup installation

- When the setup completion screen appears, select "Restart the PC now."  
\* If you select "Restart the PC later," manually restart it.

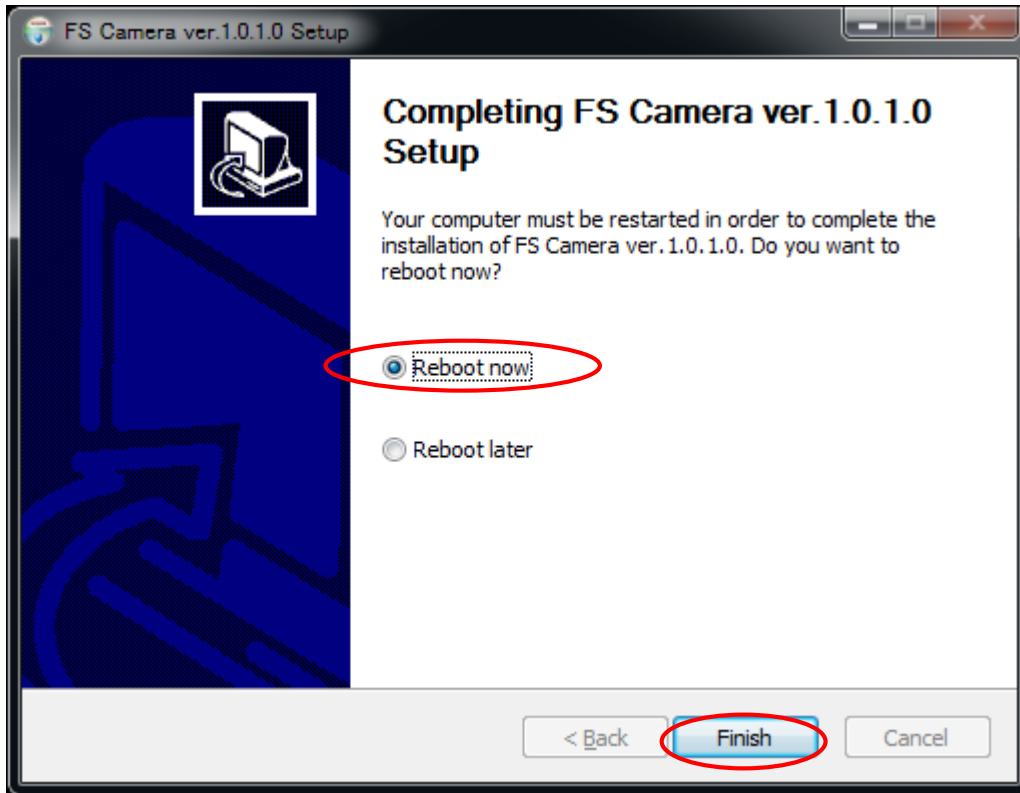


Figure 4: Setup completion screen

### 3. Checking System Operation

1. Select "MENU" - "Common" - "Options - Camera Settings" at the top of the web page.

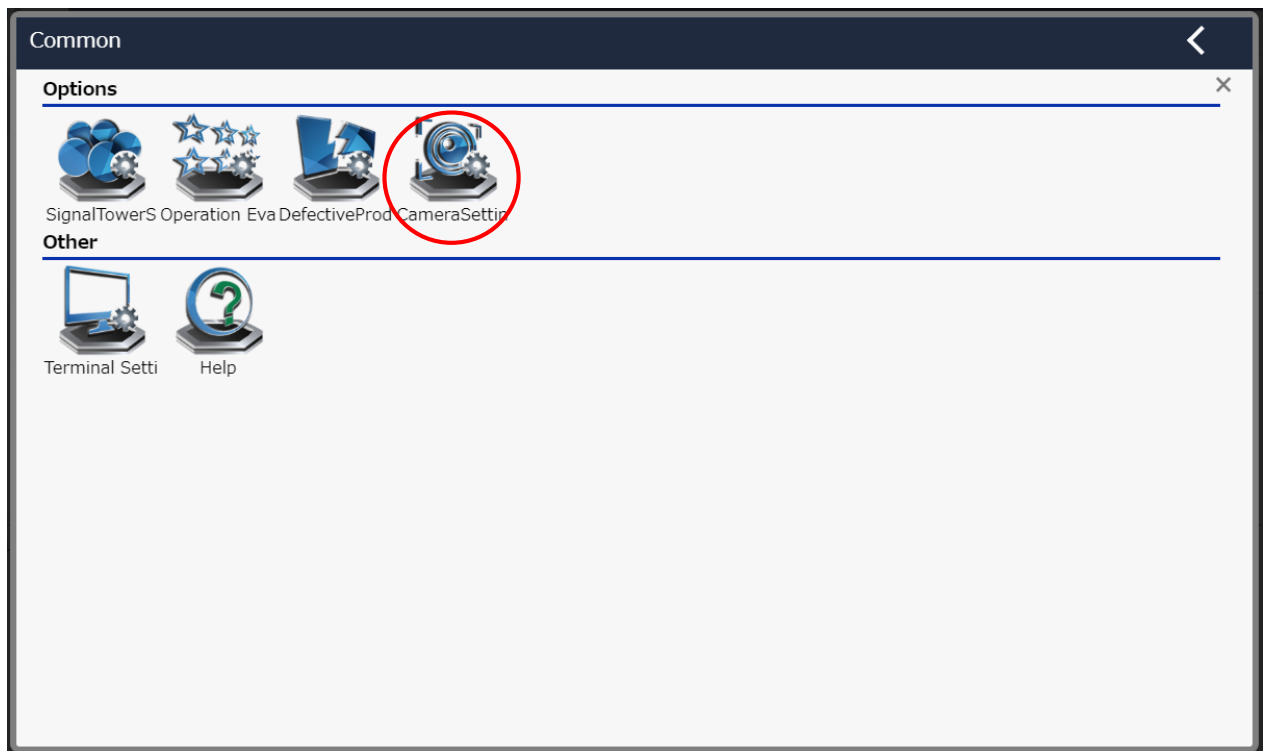


Figure 6: Camera settings selection screen on the website menu

2. Enter the administrator password in "Password" in the "Administrator authentication" dialog box and select "OK."

\* The initial administrator password is admin.

\* Issue the authentication key before this operation. Otherwise, a system error occurs.

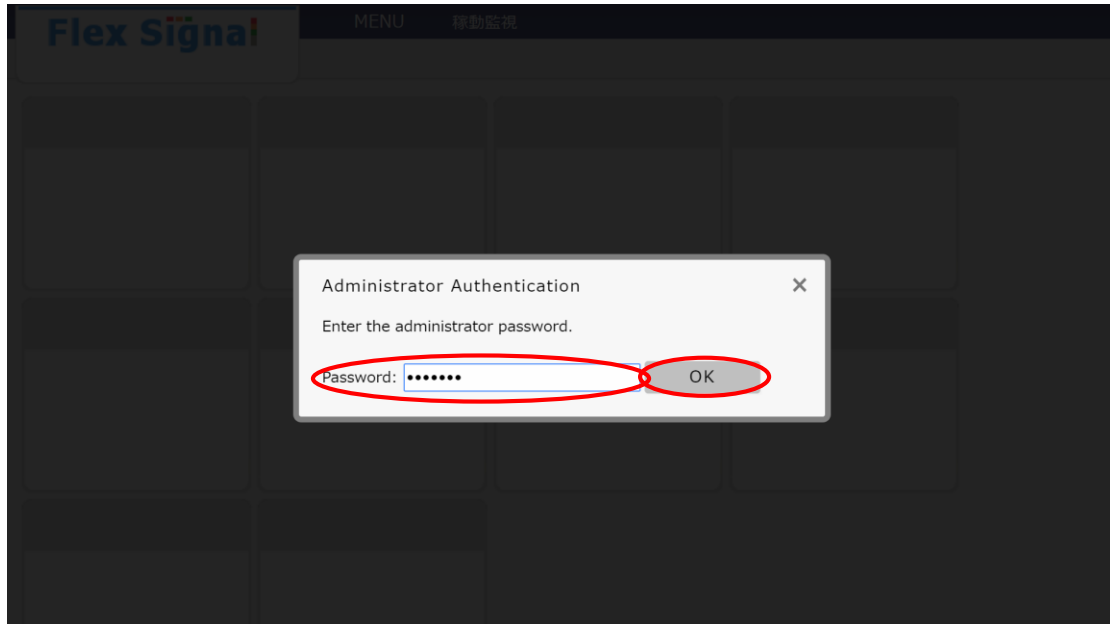


Figure 7: Website administrator authentication screen

- Execute "Save" in "Settings."

**Flex Signal** MENU 稼働監視

**Camera basic settings** Set the basic settings of the camera.

**Camera 1 setting**

Camera IPAddress	<input type="text"/>
Camera UserName	<input type="text"/>
Camera Password	<input type="text"/>
PC IPAddress	<input type="text"/>
PC UserName	<input type="text"/>
PC Password	<input type="text"/>
SignalNo.	<input type="text"/>
Display on the Andon screen	<input type="checkbox"/> To display
Recording start event	Alarm signal ▼
Range before recording	<input type="text"/>
Range time to record	<input type="text"/>

**Camera 2 setting**

Camera IPAddress	<input type="text"/>
Camera UserName	<input type="text"/>
Camera Password	<input type="text"/>
PC IPAddress	<input type="text"/>
PC UserName	<input type="text"/>
PC Password	<input type="text"/>
SignalNo.	<input type="text"/>
Display on the Andon screen	<input type="checkbox"/> To display
Recording start event	Alarm signal ▼
Range before recording	<input type="text"/>
Range time to record	<input type="text"/>

**Camera 3 setting**

Camera IPAddress	<input type="text"/>
Camera UserName	<input type="text"/>
Camera Password	<input type="text"/>
PC IPAddress	<input type="text"/>
PC UserName	<input type="text"/>
PC Password	<input type="text"/>
SignalNo.	<input type="text"/>
Display on the Andon screen	<input type="checkbox"/> To display
Recording start event	Alarm signal ▼
Range before recording	<input type="text"/>
Range time to record	<input type="text"/>

Figure 8: Camera settings screen

4. Confirm that Registration has been completed. is displayed on the screen.

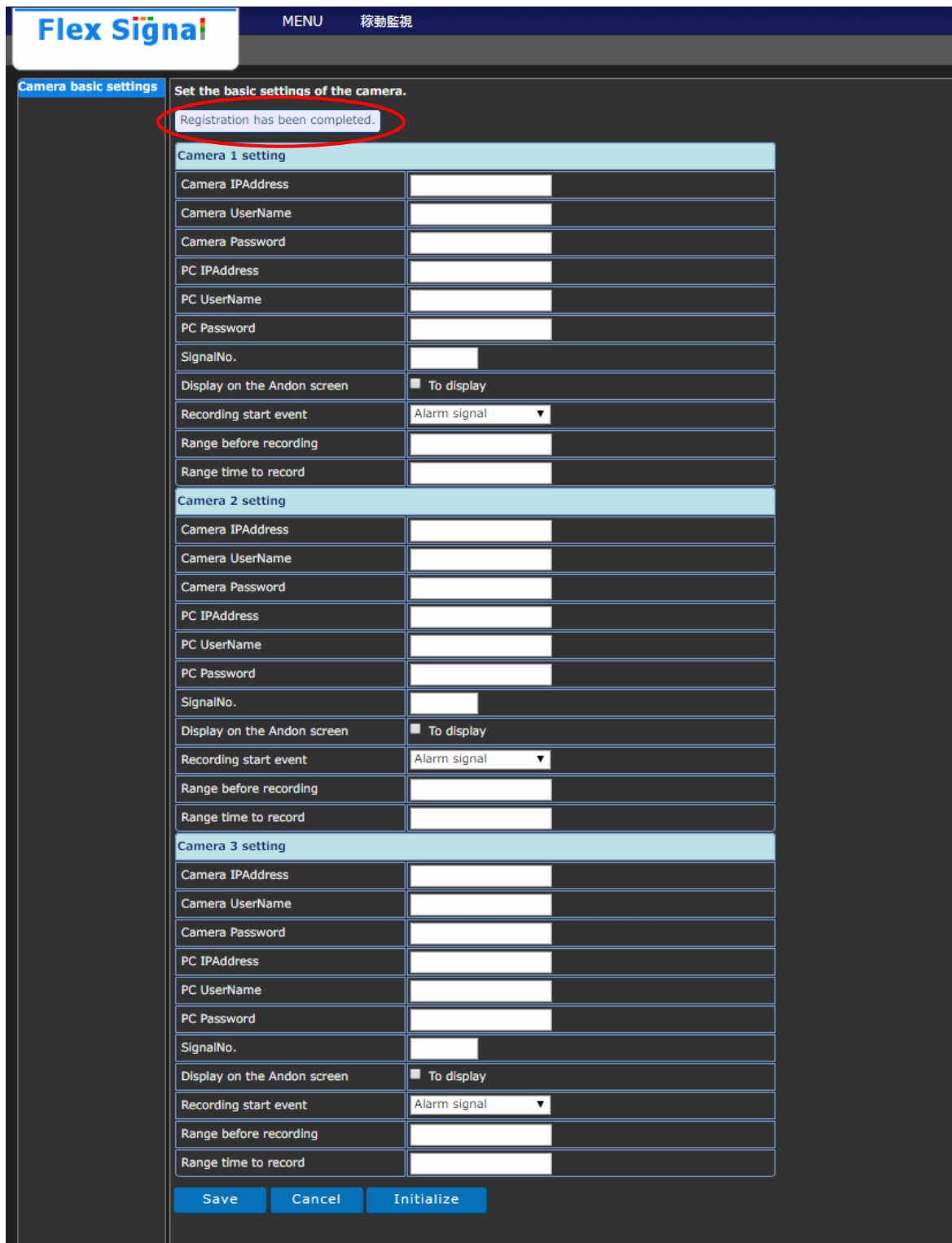


Figure 9: Camera settings registration completion screen



Shinmichi 2-15-1, Nishi-ku, Nagoya-shi, Aichi 451-0043  
Website: <http://www.tokai-soft.co.jp/>